



MANUFACTURER OF QUALITY

# IMPACT RESISTANT WINDOWS & DOORS



**qual·i·ty** (kwäl'e tē) the standard of something as measured against other things of a similar kind; the degree of excellence of something.





## OUR COMPANY

- GLASS GARAGE DOORS**...pg 8
- BI-FOLD DOORS**...pg 13
- ORNAMENTAL DOORS**...pg 9
- ELEGANT ENTRY DOORS**...pg 4-5
- CONTEMPORARY ENTRY DOORS**...pg 6-7
- FRENCH DOORS**...pg 10-11
- SINGLE HUNG WINDOWS**...pg 18
- ROLLING WINDOWS**...pg 17
- CASEMENT & PROJECT OUT WINDOWS**...pg 16
- FIXED & ARCHITECTURAL-SHAPE WINDOWS**...pg 19
- SLIDING GLASS DOORS**...pg 14-15
- PIVOT DOORS**...pg 3
- STOREFRONT PRODUCTS**...pg 12
- COMMERCIAL**...pg 20
- COLOR OPTIONS**...pg 21
- SHOWCASE HOMES**...pg 22-23

**SIW** WINDOWS & DOORS has been manufacturing since 2002 in Delray Beach, Florida. Our products are designed and constructed specifically for the South Florida market. Our 80,000 square feet of manufacturing facilities ensures that we achieve superior levels of hurricane resistance and security. We meet the most stringent requirements, including High Velocity Hurricane Zone (HVHZ) ratings and our products are Miami Dade and Florida Approved. SIW Windows and Doors, a Marvin Company, has earned its reputation manufacturing the highest quality impact windows and doors.



# PIVOT DOORS



## FRAMES

Inswing/Outswing maximum sizes are 60 x 120, 72" x 108" & 74" x 100" for a single door. Full Glass Door with the option of True Divided & Applied Rails. Heavy duty extruded aluminum with textured finish to obtain the look of wood is available. Frame depth is 4". Installation holes are pre-punched for easy installation.

## OPTIONAL COLOR FINISHES

White, Bronze, Anodized, Black Kynar, Hazelnut, English Oak, Walnut, Honey Cherry, Red Cinammon, Sandcaster and Driftwood.

## WEATHER STRIPPING

Fully weather stripped throughout, which provides a tight seal to prevent water and air filtration. Glazed with Santoprene Gasket with (100% STRAIN) = 406 PSI.

## AVAILABLE OPTIONS

Commercial 3-Point Lock with Custom Pulls. Aluminum Cladding.

Custom colors and sizes

Laminated & Insulated Glass





**SIW FRENCH DOORS** were designed and fabricated to look like wood doors, yet eliminate the maintenance, swelling and decay issues associated with wood doors.

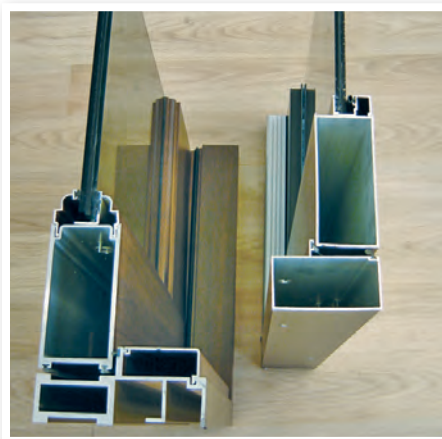
Maximum sizes tested for Double doors 101-3/8 x 144 and single doors 52 x 144.

- Heavy duty .125 extruded aluminum in frame, sill and door stiles
- Stainless steel assembly screws
- 4 1/2" frame depth
- Installation screw holes are pre-punched for easy installation
- Extruded square and ogee glazing beads
- Concealed Screws
- Santoprene™ thermoplastic glazing seal separates aluminum frames and glass. Preventing heat transfer and virtually eliminating stress cracks
- Superior weather stripping
- Dow 995 structural silicon (for high performance)
- Standard Double Bore, 3 point sentinal lock and Commercial locks
- Low-Profile and ADA sills available

**GLAZING**

Multiple glazing options are available to meet various design requirements.

- 7/16" or 9/16" laminated impact
- 1" decorative insulated impact
- 1" insulated impact



**SIW**

**Competitor**



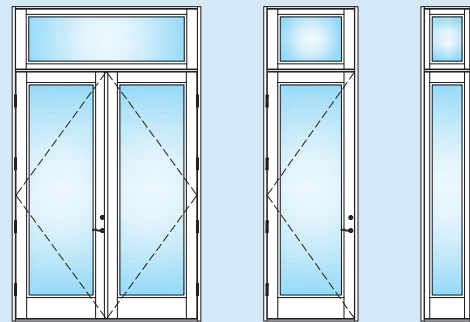
# ELEGANT ENTRY DOORS



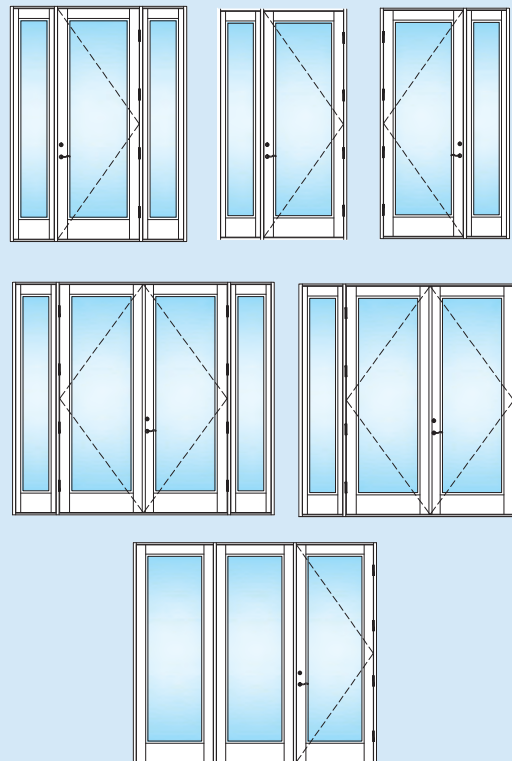
## DOORS

### Transom & Sidelite Options

All Doors and Sidelites are available with Integral Transoms. Sidelites are available as Stand Alone and Self-mating.



### Examples of Some Combination Openings Using Self Mating Sidelites







**SIW**

WINDOWS & DOORS

# NARROW STILE CONTEMPORARY DOORS

## SIW SLIM CONTEMPORARY DOORS

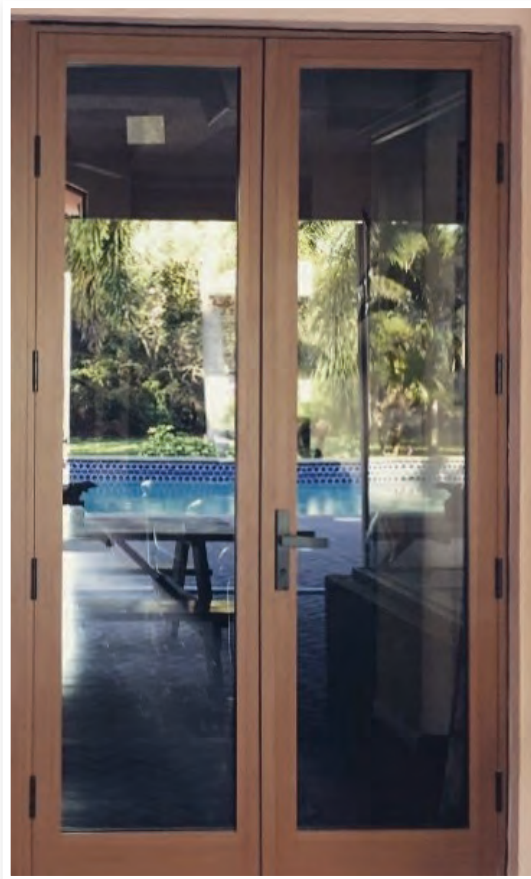
were designed and fabricated to look like steel doors, yet eliminate the maintenance and be more cost effective.

Maximum size tested 169-3/4" x 108" with side lites. Double door with transom 76 x 144 and single doors with transom 48 x 144.

- Heavy duty .125 extruded aluminum in frame, sill and door stiles
- Stainless steel assembly screws
- 4 1/2" frame depth
- Installation screw holes are pre-punched for easy installation
- Extruded square and ogee glazing beads
- Concealed screws
- Santoprene™ thermoplastic glazing seal separates aluminum frames and glass. Preventing heat transfer and virtually eliminating stress cracks
- Superior weather stripping
- Dow 995 structural silicon (for high performance)
- Standard 3 point lock hardware
- Low Profile and ADA sills available

## GLAZING

Multiple glazing options are available to meet various design requests.



# FULL STILE CONTEMPORARY DOORS







# GLASS GARAGE DOORS

**SIW GLASS GARAGE DOORS** (Miami Dade and Florida Hurricane Impact Rated) transform the curb appeal of your home providing a unique modern look.

Ideal for Commercial Buildings, Restaurants, Warehouses, and Interior Office Spaces. Manufactured with durable low-maintenance 2" stiles with true divided Lites with many glazing options available. They can enhance your home's glass expanses and patios, perfectly fusing indoor and outdoor spaces. Commercial grade aluminum powder coated in Bronze, White, Woodgrains, and also Clear Anodized.

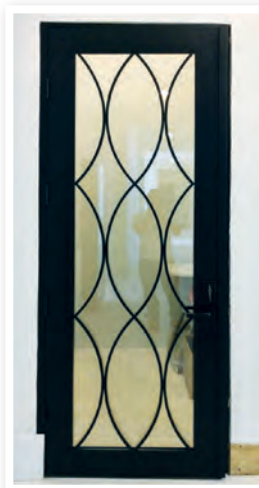
## PRODUCT SPECIFICATIONS & OPTIONS:

- Single Panels 12-4' x 14' impact resistant.
- Double Panels 18-4' x 14' impact Resistant.
- 5/16" , 7/16" or Insulated Impact.
- Solid aluminum panels, louvers, decorative colored glass and privacy glass.





# ORNAMENTAL DOORS









# FRENCH DOORS







# STOREFRONT PRODUCTS

## SIW ARCHITECTURAL STOREFRONT PRODUCTS.

We are South Florida's leading supplier of High End impact-resistant windows and doors and provide the market strong window and door systems for residential and commercial applications. Our Storefront System is capable of achieving and exceeding very high wind load demands. The thick walled construction allows SIW to achieve high loads with large glass panels up to 72 sq ft and minimal mull interruption. This commercial system is available in our standard White and Bronze as well as custom finishes.

This product series expands SIW's commercial portfolio with solutions for hotels, office buildings, storefronts, and condominiums. With a combination of high design pressures and impact-resistant glazing it is the perfect choice for hurricane prone areas.

All SIW Products meet and exceed the stringent Miami Dade County and Florida code requirements.

In addition to this product line, we have a Structurally Glazed System and a Front Set currently going through testing and will be available soon. Make sure to visit our website for updates.





# BI-FOLD DOORS



**SIW BI-FOLD DOORS** were designed and fabricated to bring your outdoors inside establishing a powerfully close connection between the home and its surroundings. Not all operable glass walls are the same. We are setting new standards for performance, aesthetics and ingenuity.

Maximum size tested 400" x 124". Unlimited amount of panels and various combinations available. Commercial and residential applications are available.

- Heavy duty extruded aluminum in frame, sill and door stiles.
- 4" and 2" vertical stiles available
- 3 7/8" frame width
- Installation screws are pre-punched for easy installation
- Santoprene™ thermoplastic glazing seal separates aluminum frames from glass preventing heat transfer and stress cracks
- Superior weather stripping
- Hardware from Interlock - New Zealand
- 3 point lock on all active doors

## GLAZING

Multiple glazing options are available.

- 7/16" laminated Impact resistant
- 1" thick SGP and PVB insulated impact resistant



MIAMI-DADE COUNTY  
APPROVED







# SLIDING DOORS



## SIW SERIES KM 600 SLIDING GLASS DOORS

are built to resist the unique and harshest weather conditions of South Florida. Constructed of heavy duty extruded aluminum, continuous weather stripping, tandem roller system, and 9/16" Dupont SentryGlas exceeds the most stringent code requirements of Miami-Dade County. Our doors have been designed to maximize view, while never compromising strength, beauty, and performance.

Maximum size tested 350-1/8" x 146-7/8" (6 panel) a Various Design Pressures Available

- Heavy duty .080 to .125 gauge extruded aluminum
- Stainless steel assembly screws
- 4" frame depth (2 track system)  
5 1/2" frame depth (3 track system)  
7" frame depth (4 track system)  
8 1/2" frame depth (5 track system)
- Santoprene™ Gasket with (100% STRAIN)=406 PSI
- Premium weather stripping.
- Gemini II - Dual point lock system with anti-slam feature. (provides up to 2,000 lbs forced entry)
- 9/16" Dupont SentryGlas
- Tracks with built-in pans and drainage holes to assure ample drainage. (Hi-rise tracks available for maximum performance during excessive water and high wind conditions)
- Tandem roller assembly made of 6061-T6 structural grade aluminum alloy with stainless steel ball bearings and adjustment screws. The 2 wheel system provides ease of use
- Interior pull handle system with comfort grip. (Available in a variety of powder coated and metal finishes)
- Unlimited door panels and configurations are available.
- Energy efficient Low-E glass option available for areas with over exposed sunlight.

MIAMI-DADE COUNTY  
APPROVED





# CASEMENT & PROJECT OUT WINDOWS

**SIW CASEMENT AND PROJECT OUT WINDOWS** are built tough. Fabricated with heavy duty commercial grade aluminum and laminated glass. They are designed to imitate the look of a wood window, yet eliminate the high maintenance, swelling, and decay associated with wood windows, never compromising beauty and strength. All screws are concealed and finished with aluminum beauty caps.

## PROJECT OUT

### Frame Material and Construction

*Maximum size tested 37 x 80 and 80 x 80 to +80 -80 psf.*

- Heavy duty .078 extruded aluminum
- Stainless steel assembly screws
- Frame depth 3" for all of our windows
- Installation screw holes are pre-punched for easy installation
- Extruded ogee glazing beads and muntins
- Santoprene™ thermoplastic glazing seal separates aluminum frames and glass. Preventing heat transfer and virtually eliminating stress cracks
- Premium weather stripping
- Dow 995 structural silicone (for high performance)

## CASEMENTS

### Frame Material and Construction

*Maximum size tested 37 x 80 to +80 -80 psf.*

- Heavy duty .078 extruded aluminum
- Stainless steel assembly screws
- Frame depth 3" for all of our windows
- Installation screw holes are pre-punched for easy installation
- Extruded ogee glazing beads and muntins
- Santoprene™ thermoplastic glazing seal separates aluminum frames and glass. Preventing heat transfer and virtually eliminating stress cracks
- Premium weather stripping
- Dow 995 structural silicone (for high performance)





# ROLLING WINDOWS



**SIW WINDOWS** are built tough. Fabricated with heavy duty commercial grade aluminum and laminated glass. They are designed to imitate the look of wood windows, yet eliminate the high maintenance, swelling, and decay associated with wood windows. Our engineers have designed our Rolling Window to look like a casement window, never compromising beauty and strength.

## ROLLING WINDOW

### Frame Material and Construction

*Maximum size tested 144" X 76" & 173" x 63" to +80 -100 psf.*

- Heavy duty .078 extruded aluminum
- Stainless steel assembly screws
- Frame depth 3" for all of our windows
- Installation screws are pre-punched for easy installation
- Extruded ogee glazing beads and muntins
- Glass is insulated between aluminum frame and glass to prevent heat transfer and glass stress cracks
- Premium weather stripping
- Dow 995 structural silicone (for high performance)
- Meeting rail mounted sweep locks

## SINGLE HUNG

### Frame Material and Construction

*Maximum size tested 53 1/8 X 96 to +106.5 -130 and 16 psf water (Hercules Series)*

- Heavy duty .078 extruded aluminum
- Stainless steel assembly screws
- Frame depth 3" for all of our windows
- Installation screws are pre-punched for easy installation
- Extruded ogee glazing beads and muntins
- Santoprene™ thermoplastic glazing seal separates aluminum frames and glass. Preventing heat transfer and virtually eliminating stress cracks
- Premium weather stripping
- Dow 995 structural silicone (for high performance)
- Meeting rail mounted sweep lock







**SIW**

WINDOWS & DOORS

# SINGLE HUNG WINDOWS

## **SIW IMPACT WINDOWS AND DOORS, LLC**

manufactures the highest quality aluminum impact resistant windows and doors in the residential and high-rise market.

At **SIW IMPACT WINDOWS AND DOORS, LLC** we don't sacrifice aesthetics for functionality. Our windows not only look beautiful, they are strong enough to withstand hurricanes and still be functional.

**SIW IMPACT WINDOWS AND DOORS, LLC** designed their products through accumulated knowledge and experience. We don't just modify or adapt old technology, **SIW** engineers started from a clean slate. We tested and passed all of our products utilizing Miami-Dade protocols and we never compromise a design. Simply stated *"We make beautiful windows"*.

Traditionally, a window was just a window. The market was driven by competitive bidding and product selection was decided by the lowest cost. Now, product selection is determined by new demands from highly educated and sophisticated consumers taking into consideration life cycle, cost, strength, and value engineering.

These values are what makes **SIW IMPACT WINDOWS AND DOORS, LLC** unique. All of our windows are fabricated with heavy .078 to 1.25 thick aluminum frame, (not PVC), and laminated glass. Our window's low tolerance reduces air-infiltration, therefore reducing heat transfer between the inside and the outside. Low-E glass and insulated glass options are available for areas with over exposed sunlight.

**SIW** products are approved in the State of Florida and also in Miami-Dade County. Our manufacturing facility is equipped with the latest technology and machinery to be able to provide accurate and precise dimensions for our products.

Multiple glazing options are available.



MIAMI-DADE COUNTY  
APPROVED



# FIXED & ARCHITECTURAL SHAPE WINDOWS



## SIW FIXED AND ARCHITECTURAL WINDOWS

are built tough. Fabricated with heavy duty commercial grade aluminum and laminated glass. They are designed to imitate the look of a wood window, yet eliminate the high maintenance, swelling, and decay associated with wood windows, never compromising beauty and strength. All screws are concealed and finished with aluminum beauty caps.

**Frame Material and Construction to**  
Maximum size tested 53 1/8 x 96 with  
+ 90 -130 psf and 72 x 108 with +70  
-70 psf

- Heavy duty .078 extruded aluminum
- Stainless steel assembly screws
- Frame depth 3" for all of our windows
- Installation screws are pre-punched for easy installation
- Extruded ogee glazing beads and muntins
- Santoprene™ thermoplastic glazing seal separates aluminum frames and glass. Preventing heat transfer and virtually eliminating stress cracks
- Premium weather stripping
- Dow 995 structural silicone (for high performance)



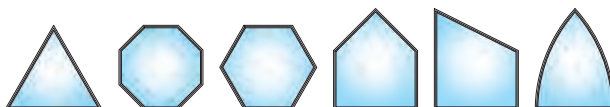
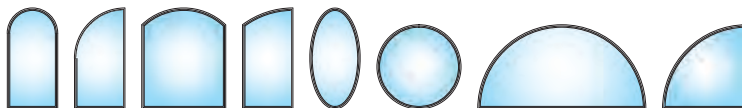
## GLAZING

Multiple glazing options are available to meet various design requests.

- 7/16" or 9/16" laminated impact
- 11/16", 1" or 1-1/4" insulated impact

## OPTIONAL GLASS COLORS

Grey ■ Bronze ■ Green





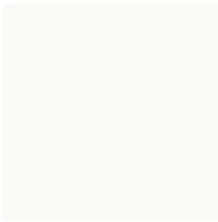


# COMMERCIAL PRODUCTS

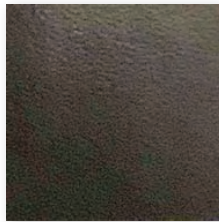




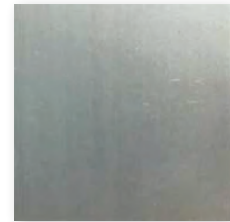
# COLOR OPTIONS



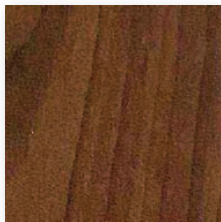
White Bone Kynar



Bronze



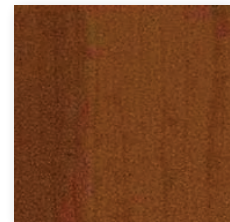
Clear Anodized



Hazelnut



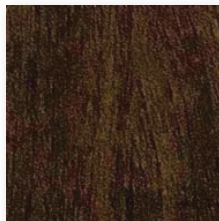
English Oak



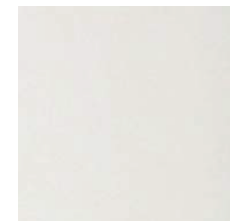
Honey Cherry



Red Cinnamon



Walnut



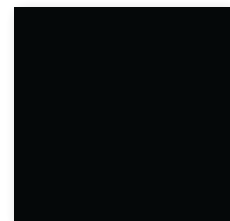
White



Sandcaster



Driftwood



Black Kynar











